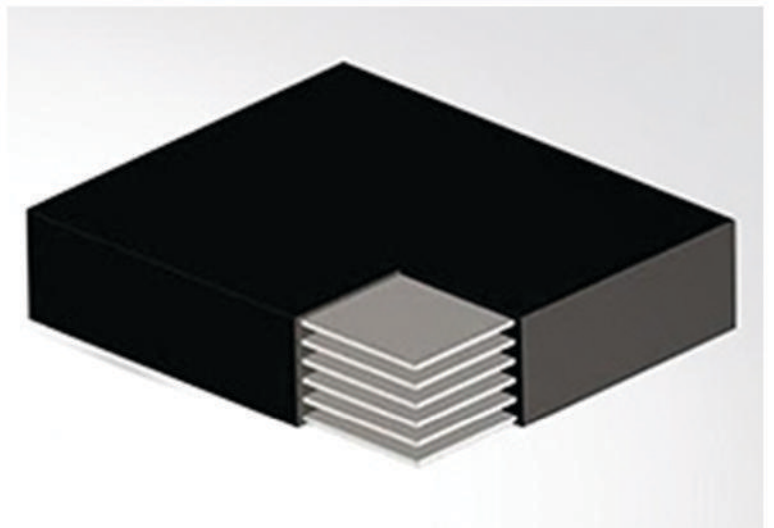




Jiangsu Wanbao Bridge Component Co. Ltd.



Expansion Joints



Bearing Pads



江苏万宝
WANBAO

China Office

Address: Shanghai to Changshu Liantang
Industrial Road No. 18 Eastern Jiangsu
Province (Shang Town yuanyangqiao
Industrial Zone), China

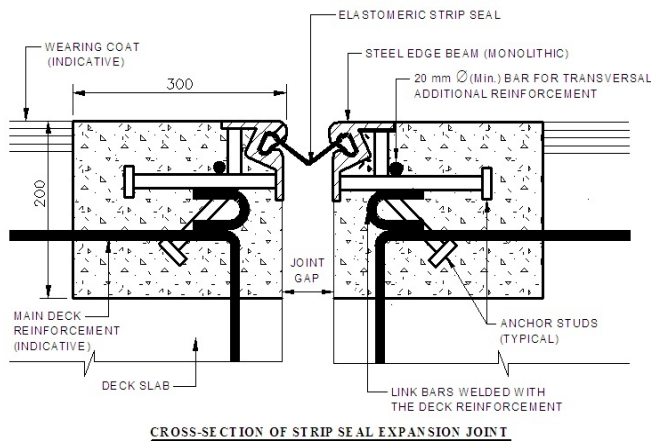
Tel:0512-52444268

E-mail:wanbao@cswanbao.com

Wanbao Expansion joints

Jiangsu Wanbao Bridge Component Co., Ltd. China (JWBCL) has become the largest manufacturer of Bridge Expansion joints in East China. JWBCL is the only company that has 30 years, experience of in R&D and works for world-renowned companies like BASF (WABO), JWBCL has its trademark for more than 40 patents like WBPZ (KL), WKJ-QZ Seismic, HDR, LNR Series, JPZ, and JQZ. These patents are being copied throughout China.

Wabo StripSeal Expansion joint system consists of an elastomeric gland mechanically locked between two steel edge members providing a superior watertight sealing system. The rugged design of the WaboStripSeal system can easily accommodate the high loads of vehicular traffic while effectively sealing expansion joints in bridges and structures with movements up to five inches. WaboStripSeal systems can be manufactured to accommodate a variety of field configurations along with multidirectional movements. The WaboStripSeal has been engineered so that the neoprene seal can be inserted before or after securing the steel extruded shapes to the superstructure. Machined Steel extruded profile maximizes seal install ability and minimizes manufacturing tolerance associated with overall Steel Shape manufacture.



M-300 Installation at Sultan Bahoo Bridge Over River Chenab.

Extruded Steel Profiles M-300 Description:

Steel Profile:

The Following Steel profiles are extruded; only Grade A35 and A36 Steel have been used in manufacturing.

Steel Anchorage:

The Anchorage system consists of vertical and horizontal metal studs that have been welded with extruded profiles. The other end of the anchors is welded with steel bars exposed from the deck slab during installation for further reinforcement.

Elastomeric Profile:

A strip seal (bird tale shaped) is connecting the two adjacent profiles, Continuous sealing element prevents water from leaking through the expansion joint opening.

Salient Features:

Among all the counter options for small movements. Strip seal type expansion joint is the most preferred and internationally recognized. It has been mentioned and approved as per AASHTO, AREMA, and BS-EN Standards and is among the very few Expansion joints which have been recommended for use by WSDOT (Washington State Department Of Transportation).

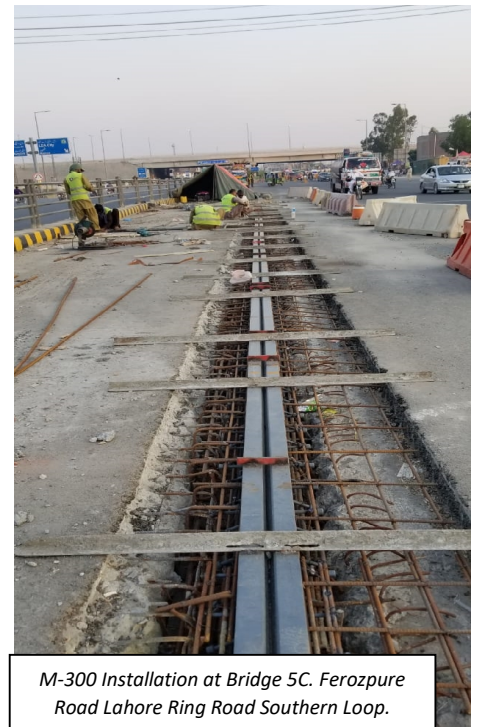
Corrosion Protection:

The reservation that many have regarding corrosion of steel profile, for which application of zinc metal spray galvanizing has been done 50µm.

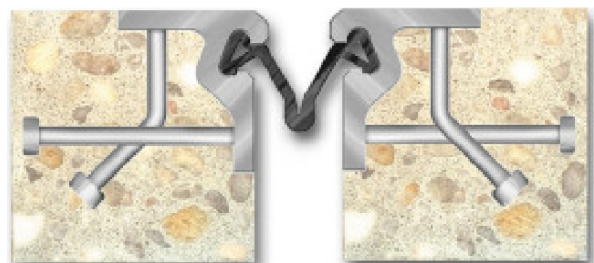
Ride Quality and Durability:

Noise-free and tire-friendly ride quality is guaranteed through the robust mechanical properties of the strip seal type.

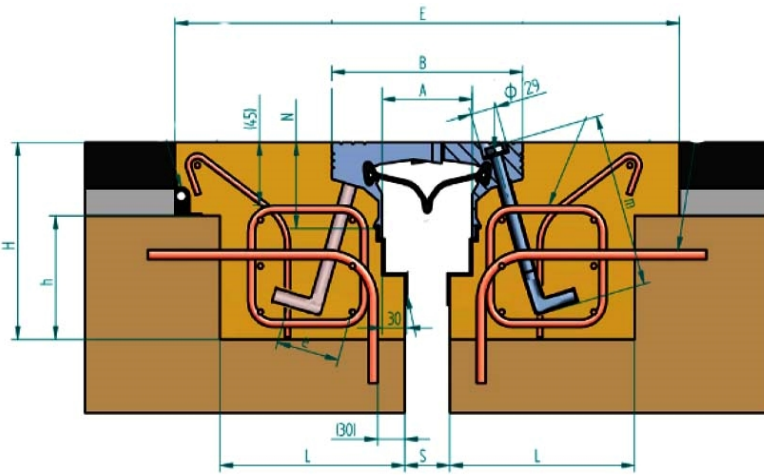
Although being Cost friendly this is the expansion joint whose steel profile extends a warranty of 20 years.



M-300 Installation at Bridge 5C, Ferozpure Road Lahore Ring Road Southern Loop.



Jiangsu Wanbao Aluminum Alloy Saw Tooth/ Finger ST-Type Expansion joint



Extruded ST Profiles Description:

Alloy Aluminum Profile:

Belonging to the Finger type, these joints comprise two extruded aluminum alloy sections of 19mm top plate thickness supplied in two-meter lengths and laid opposite each other. A series of pairs of sections installed end-to-end form the joint seam. The metal elements are anchored to the main structure by fasteners.

Steel Anchorage:

The Anchorage system consists of L-Type MS studs that have been Bolted with Check Nuts at the spacing of 9 inches from Centre to Centre with the extruded profiles and the other end of the anchors are welded with steel bars exposed from the deck slab during installation for further reinforcement.

Elastomeric Profile:

A strip seal (bird tale shaped) is connecting the two adjacent profiles, Continuous sealing element prevents water from leaking through the expansion joint opening.

Salient Features:

Saw Tooth ST-type expansion joint is approved by Provincial Government (Punjab, KPK) as per the latest MRS (Market Rate System 2022). It has been mentioned and approved by renowned consultants of Pakistan such as NESPAK.

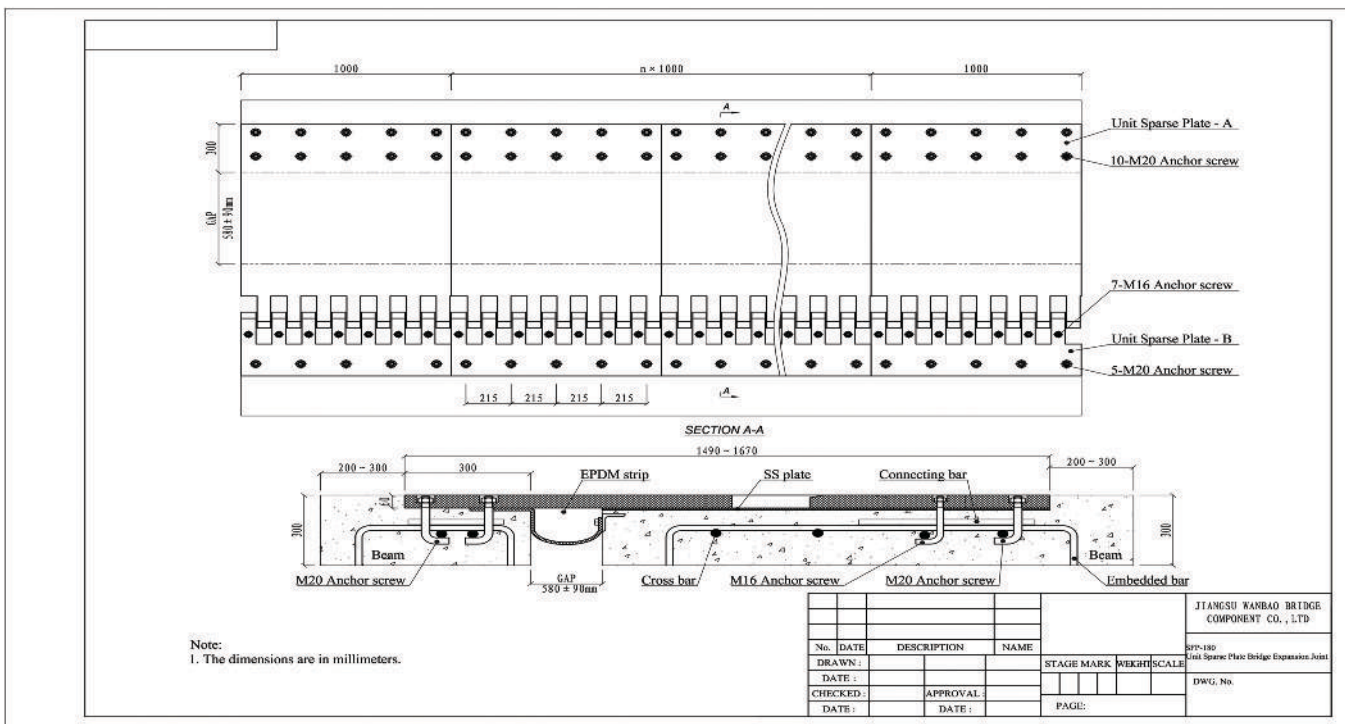
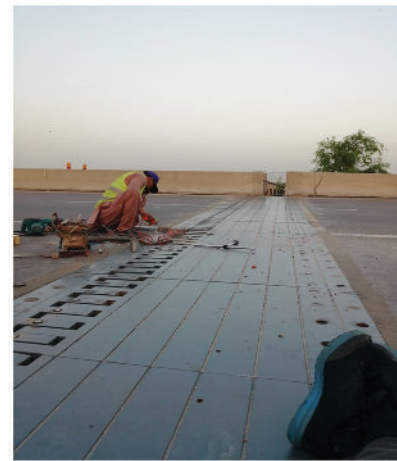
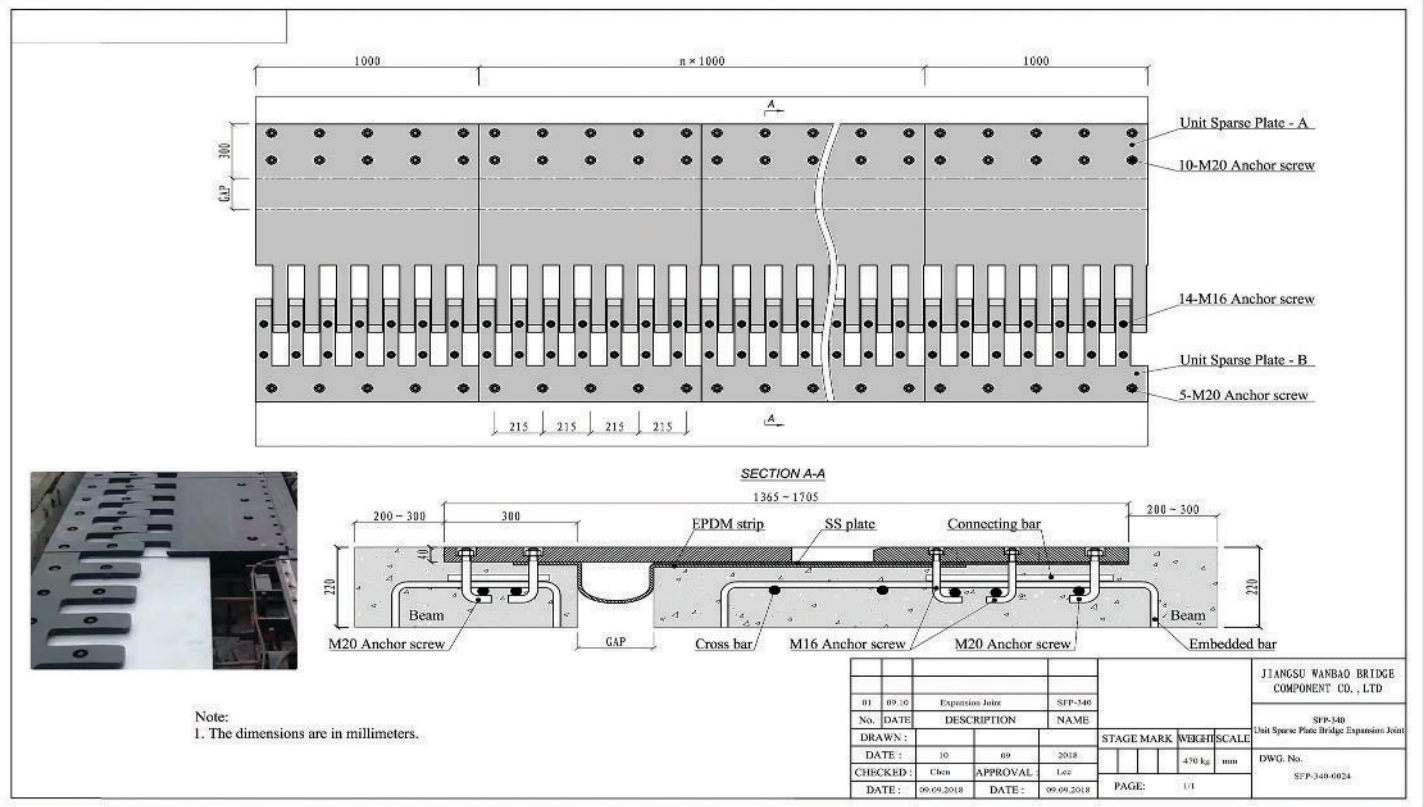
Extruded Alloy Aluminum Profiles Description:

Model: ST-50, ST-80, ST-100
Manufacture: Jiangsu Wanbao Bridge Co. Ltd.
Design by: Mr. Chenming
Origin: China
Material: Aluminum Alloy

Material Type: 6063
Hardness: T6
Manufacturing Type: Extrusion
Anchorage: MS Steel
Anchorage Design: L Shape

Model	Movement Range	Top Plate Thickness	Nuts [center to center]	Flat plate	Saw tooth	Finger/ Comb Type
ST-50	25-50	19 mm	222 mm	Available	Available	Available
ST-80	50-80	19 mm	222 mm	Available	Available	Available
ST-100	50-100	19 mm	222 mm	Available	Available	Available

Installation of Jiangsu Wanbao Finger Expansion joints SFP-180 at Paneand River Bridge on M-2.





Address: 25-B, XX-Block, Khayaban-e-Iqbal, DHA Phase III Lahore, Pakistan (54810)

Tel: 042-37186357

Mob: +92 300 8400 206

E-mail: fahad@saviourimpex.com